



COLLABORATING TO BETTER SERVE
THE EDUCATIONAL NEEDS OF ADULTS

AB 86: Adult Education

Los Angeles Regional Adult Education Consortium
All Districts' Faculty Working Sessions

October 17, 2014

<http://ab86.cccco.edu>



CALIFORNIA COMMUNITY COLLEGES
CHANCELLOR'S OFFICE



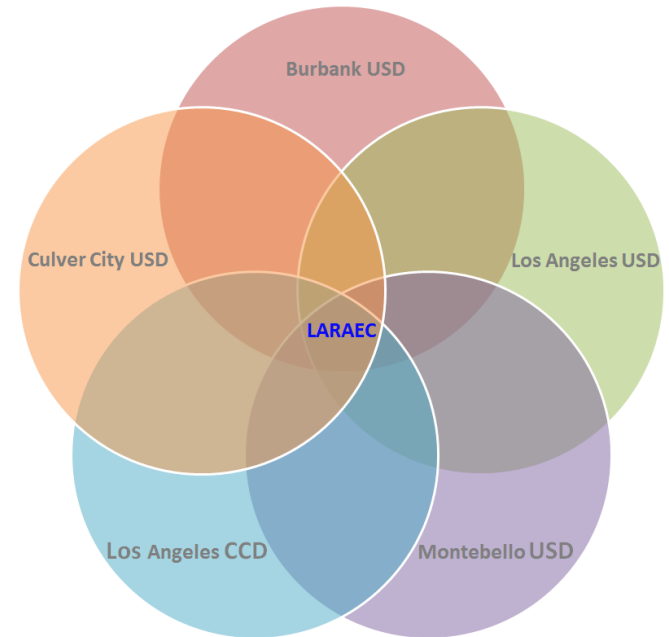
California Department of
EDUCATION

Today's Agenda

9:30 am – 12:30 pm

- **Welcome**
- **Recap of Objectives 5, 6, and 7 (KH)**
 - AB86 Objective 3 – Integrated and Seamless
 - AB86 Objective 5 – Accelerated Learning
 - AB86 Objective 6 – Professional Development
- **AB86 Objective 7 – Regional Partners**
 - Modified Open Forum Discussions
 - Regional Partners Meeting with Core Leadership Team
- **LARAEC Executive Team Panel**
- **Wrap Up**

VISION:
The LARAEC will sustain, expand
and improve adult education to
our region.



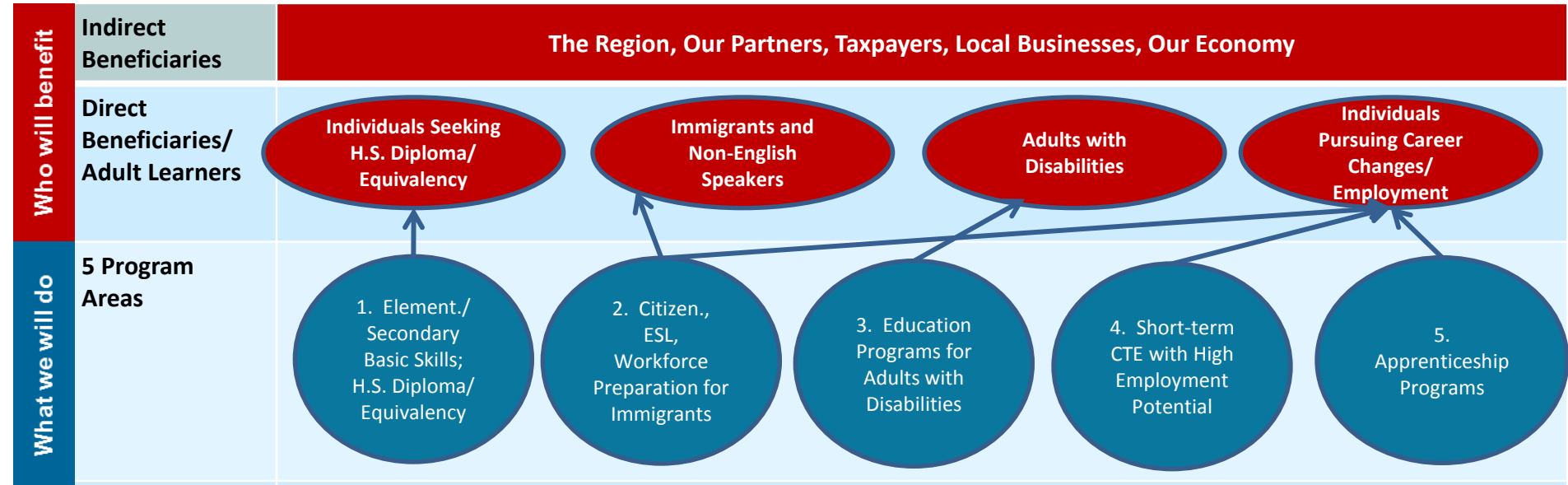
Draft Strategy Map: AB86

Vision: "The LARAEC will sustain, expand and improve adult education.



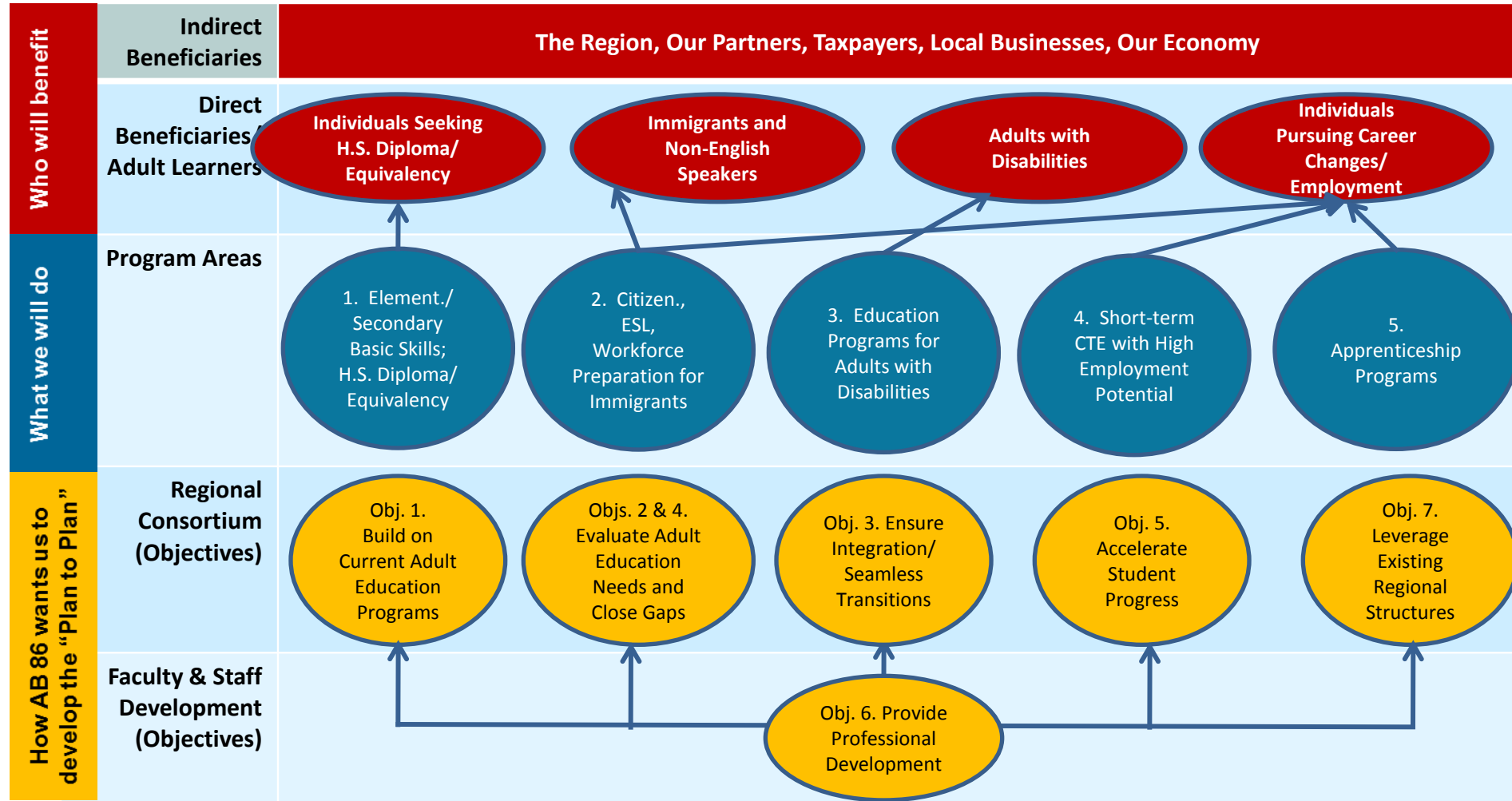
Draft Strategy Map: AB86

Vision: “The LARAEC will sustain, expand and improve adult education.

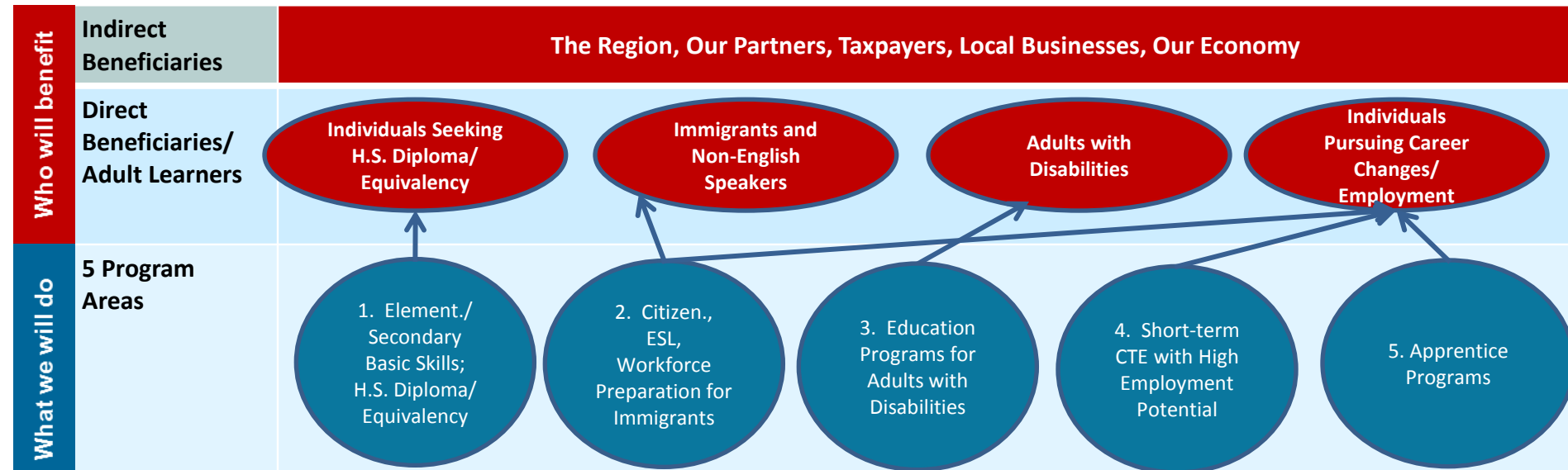


Draft Strategy Map: AB86

Vision: “The LARAEC will sustain, expand and improve adult education.

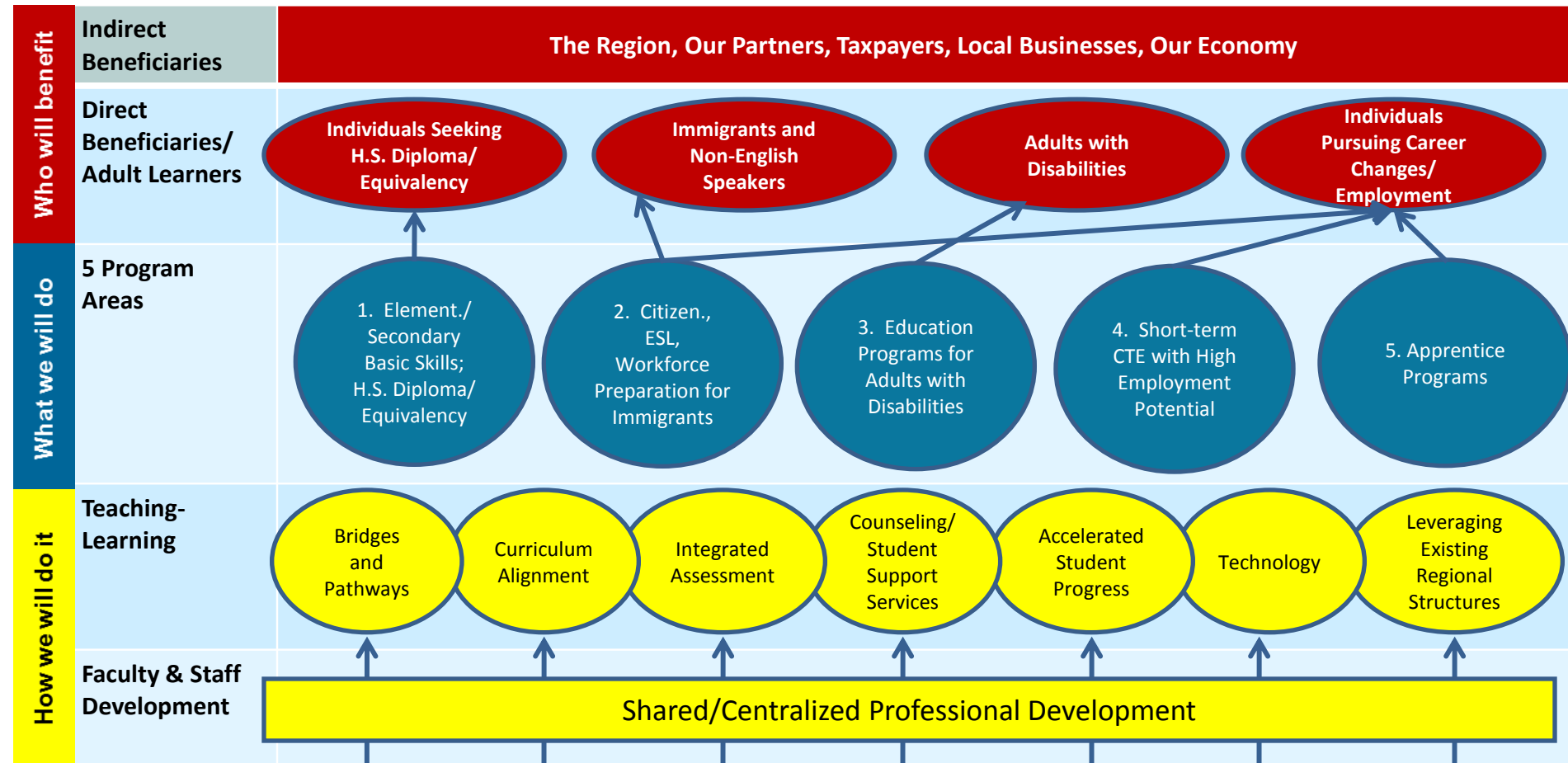


Vision: “The LARAEC will sustain, expand and improve adult education. It will create seamless programs and pathways to workforce and higher education that are regionally relevant, efficient, comprehensive, and that leverage community resources through a structured and collaborative interagency approach. Programs will be student centered, data driven and focused on best practices. Students will gain 21st century skills; meet their employment, academic and civic goals; and contribute to the economic vitality of the Los Angeles region.”



Based on the State of California’s objectives, faculty involved with LARAEC from the 5 districts have come up specific strategic approaches that will help achieve AB86’s goals.

Vision: “The LARAEC will sustain, expand and improve adult education. It will create seamless programs and pathways to workforce and higher education that are regionally relevant, efficient, comprehensive, and that leverage community resources through a structured and collaborative interagency approach. Programs will be student centered, data driven and focused on best practices. Students will gain 21st century skills; meet their employment, academic and civic goals; and contribute to the economic vitality of the Los Angeles region.”



Vision: “The LARAEC will sustain, expand and improve adult education. It will create seamless programs and pathways to workforce and higher education that are regionally relevant, efficient, comprehensive, and that leverage community resources through a structured and collaborative interagency approach. Programs will be student centered, data driven and focused on best practices. Students will gain 21st century skills; meet their employment, academic and civic goals; and contribute to the economic vitality of the Los Angeles region.”



Evidence Based: Student Progress Indicators and Major Outcomes

Objective #7

- Plans to leverage existing regional structures, including, but not limited to, local workforce investment areas.



Objective #7: Plans to leverage existing regional structures, including, but not limited to, local workforce investment areas.

Describe how the consortium will leverage existing assets or structures to benefit the adult learners in the region. These assets or structures might include, for example, contributions from or collaborations with local Workforce Investment Boards (WIBs), industry employer groups, chambers of commerce, and county libraries.

For example, a consortium might include in its plan to offer classes, taught by one of the member districts, at a local Workforce Development Center which is easily accessible by members of the community. Another consortium might opt to work with the industries in its region to develop a career transition program focused on helping students with disabilities gain the necessary skills to enter the workforce.

•Identify existing regional structures and their resources. These might include but are not limited to:

- WIBs
- Chamber of Commerce
- County Libraries
- County Office of Education
- Industry Employer Groups
- Literacy Coalitions
- Economic Development Regions
- County Social Services - CalWorks
- Employment Development Department (EDD)

•Identify current engagement strategies and describe how these strategies leverage regional structures.

- Outreach by regional consortia to existing regional structures
- Utilization of existing regional resources
- Positioning of the regional consortium to be responsive to economic needs
- Positioning of the consortium to be stronger and more effective

LARAEC Partners

(Illustrative Only)

- Asian Americans Advancing Justice Los Angeles
- Associated Builders and Contractors, Los Angeles
- BizFed - The Los Angeles County Business Federation
- Centro Latino for Literacy
- City of Burbank Library Services
- City of Burbank Management Services
- City of Los Angeles, Economic Workforce Development Department
- Los Angeles Chamber of Commerce Education and Workforce Development
- Los Angeles City Chamber of Commerce
- Los Angeles City Workforce Investment Board (WIB)
- Los Angeles County Workforce Investment Board
- Los Angeles Public Library
- Los Angeles Urban League
- State of California's Employment Development Department, Los Angeles - Ventura Workforce Services Division
- Los Angeles Regional Adult Education Consortium (LARAEC)
- Tomas Rivera Research Institute (USC)
- Verdugo Workforce Investment Board (Service Area: Glendale, Burbank, La Canada Flintridge)

Objective #7: Plans to leverage existing regional structures, including, but not limited to, local workforce investment areas.

Focus Today			Also Required for the Planning Grant		
Partner Institute Supporting Regional Consortium	Program Area to be Addressed (1-5)	Tasks/Activities Needed to Implement Support of the Program	Member Counterpart(s)	Partner Contribution	Time Line

Defining Partnership Relationships:

What partners are most supportive of AB86 programs

Objective #7: Plans to leverage existing regional structures.

Partner Categories	1. Basic Skills	2. Immigrants (citizenry, ESL, work skills)	3. Adults with Disabilities	4. ST CTE	5. Apprentice
Workforce Investment Boards (WIBs) and their networks		✓		✓	
County and city departments which includes libraries, probation offices, and economic development offices	✓	✓	✓	✓	
Apprenticeship providers	✓		✓	✓	✓
Business and industry representatives	✓		✓	✓	✓
Labor organizations	✓	✓		✓	✓
Nonprofits that offer direct and indirect support services, including advocacy organizations, chambers and social service organizations	✓	✓		✓	
Other school districts who are not members	Identified as better partners once LARAEC is developed with its current configuration of School Districts and LACCD.				
National partners that include professional development organizations, educational research groups, and foundations that work with and support the adult learner population	Identified as better long-term partners				

Modified Open Space: Ground Rules

The **Law of Two Feet** means you take responsibility for what you care about.

- You can move to whatever place you can best contribute or learn.

Whoever comes is the right people.

- Whoever is attracted to the same conversation are the people who can contribute most to that conversation – because they care.
- You can enter any discussion as you feel inspired.

Whatever happens is the only thing that could have.

- We are all limited by our own pasts and expectations.
- We'll all do our best to focus on NOW, and not get bogged down in what could've or should've happened.

When it's over, it's over.

- The creative spirit has its own time. Creativity has its own rhythm.
- When you believe you have gotten your ideas captured, you can leave.

We will **capture and share the ideas** with you and the Working Groups next week.



Objective #7: Plans to leverage existing regional structures

Partner Categories	Recorders
Workforce Investment Boards (WIBs) and their networks	Charlotte Maure (KH)
County and city departments which includes libraries, probation offices, and economic development offices	Heather Sims (KH)
Business and industry representatives, apprenticeship providers, and labor organizations	WestEd
Nonprofits that offer direct and indirect support services, including advocacy organizations, chambers and social service organizations	WestEd

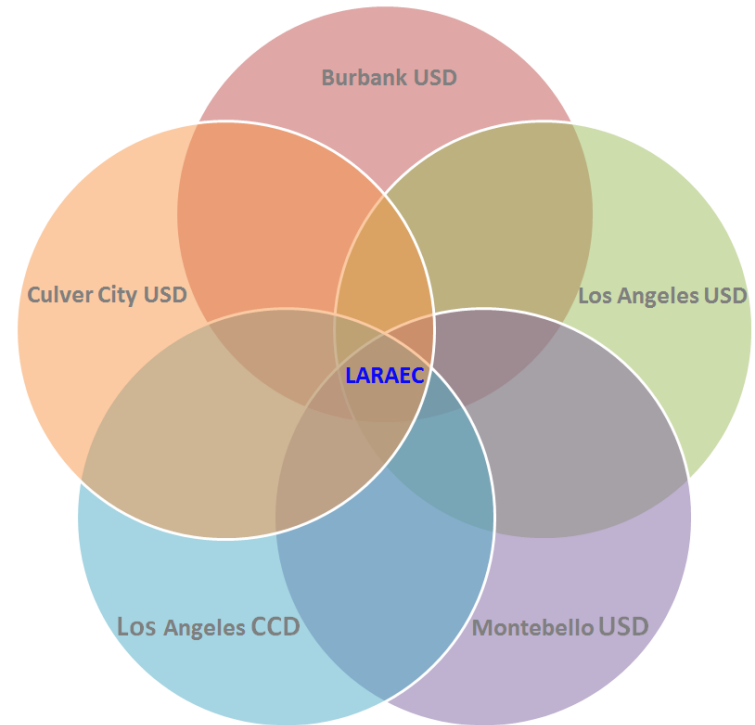
LARAEC Executive Panel

- **LARAEC Executive Team**

- Dr. Marvin Martinez, President, ELAC
- Donna Brashear, Executive Director, LAUSD/DACE
- Emilio Urioste, Jr., Director Adult Education, ILA & CTE, BUSD
- Kathy Brendzal, Director, MUSD

- **Thank you!**

- Andrea Rodriguez, East Los Angeles Skills Center, Principal



Next Steps

- Consensus areas for the “Plan to Plan”
- Submission to State
- Working Groups to Develop the Plans
- General Meeting – November or December



AB86 Timeline

Major Reports Submitted or Due	Feb 24, 2014	Jul 31, 2014	Oct 31, 2014	Dec 31, 2014	Mar 31, 2015	Aug 31, 2015
1. LARAEC's planning grant application with preliminary budget summary	Done					
2. LARAEC's regional comprehensive plan to date and expenditure report		Done				
3. LARAEC's regional comprehensive plan to date and expenditure report			Due			
4. Final draft				Due		
5. Final LARAEC's regional comprehensive plan					Due	
6. Final expenditure report						Due

Assessment of the 5-Week Experience as Useful Input for Future Meetings

